

Lion's Den

Suite, Furniture, and Window Measurements

The following diagrams represent the most common suites in the Lion's Den. If you were assigned to a suite type that is not listed on this sheet please contact the Housing Office for more information on the measurements of your room.

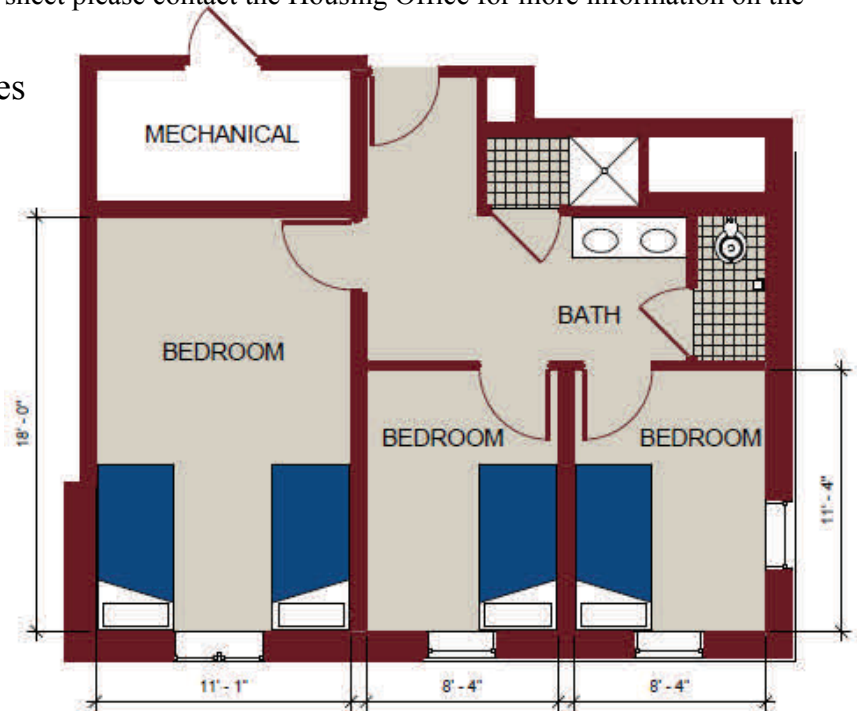
Single/Single/Double Suites

North:

- 1st - 123, 127, 132, 133
- 2nd - 207, 208, 211, 215, 220, 221
- 3rd - 307, 308, 311, 315, 320, 321
- 4th - 407, 408, 411, 415, 420, 421

South:

- 1st - 108, 123, 124, 129, 130
- 2nd - 207, 208, 211, 212, 217, 218
- 3rd - 307, 308, 311, 312, 317, 318
- 4th - 407, 408, 411, 412, 417, 418



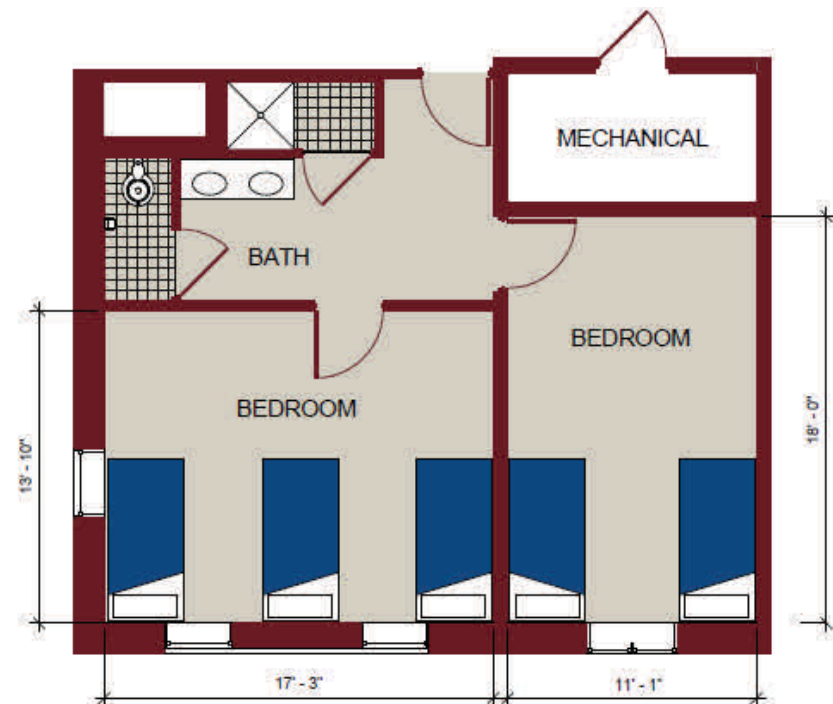
Triple/Double Suites

North:

- 1st - N/A
- 2nd - 201, 202**
- 3rd - 301, 302**
- 4th - 401, 402**

South:

- 1st - N/A
- 2nd - 201**, 202
- 3rd - 301**, 302
- 4th - 401**, 402



** These are ADA accessible suites, layouts are available on our website

*Please be aware that even in the standard suites there may be some variances from room to room in exact dimensions.

Furniture: Bed Frame: 36" W x 80" L x 60" H
 Desk: 32" W x 24" D x 30" H
 Pedestal Drawer: 17" W x 24" D x 30" H
 Dresser: 30" W x 24" D x 30" H
 Wardrobe: 36" W x 24" D x 72" H

Windows: 1st Floor Double/Double 81-1/2" H x 46-1/2" W
 4th Floor Double/Double 57-1/2" H x 46-1/2" W
 1st Floor Single Room of a Double/Single/Single Suite 81-1/2" H x 34-1/2" W
 1st Floor Double Room of a Double/Single/Single Suite 81-1/2" H x 46-1/2" W
 1st Floor ADA room of the Double/Double Accessible Suite 3EA @ 81-1/2" H x 34-1/2" W
 1st Floor Double room of the Double/Double Accessible Suite 1EA @ 81-1/2" H x 46-1/2" W
 2nd -3rd Floor Double/Double 69-1/2" H x 46-1/2" W
 2nd -3rd Floor Double Room of Double/Triple Suite 69-1/2" H x 46-1/2" W
 2nd -3rd Floor Triple Room of Double/Triple Suite 3EA @ 69-1/2" H x 34-1/2" W
 2nd -3rd Floor Single Room of a Double/Single/Single Suite 69-1/2" H x 34-1/2" W
 2nd -3rd Floor Double Room of a Double/Single/Single Suite 69-1/2" H x 46-1/2" W
 4th Floor Single Room of a Double/Single/Single Suite 57-1/2" H x 34-1/2" W
 4th Floor Double Room of a Double/Single/Single Suite 57-1/2" H x 46-1/2" W
 4th Floor ADA room of the Double/Double Accessible Suite 3EA @ 57-1/2" H x 34-1/2" W
 4th Floor Double room of the Double/Double Accessible Suite 1EA @ 57-1/2" H x 46-1/2" W
 4th Floor Double Room of Double/Triple Suite 57-1/2" H x 46-1/2" W
 4th Floor Triple Room of Double/Triple Suite 3EA @ 57-1/2" H x 34-1/2" W

Double/Double Suites

North:

1st - 107, 109, 125**, 128, 129, 130, 131
 2nd - 203, 205, 206, 213**, 216, 217, 218, 219
 3rd - 303, 305, 306, 313**, 316, 317, 318, 319
 4th - 403, 405, 406, 413**, 416, 417, 418, 419

South:

1st - 104, 106, 125, 126*, 127
 2nd - 204, 205, 206, 213, 214*, 215
 3rd - 304, 305, 306, 313, 314*, 315
 4th - 404, 405, 406, 413, 414*, 415

*126C, 214C, 314C, & 414C are singles off of D/D suites
 ** 125, 213, 313, 413 are ADA suites, layouts are on our website

